

All participants N=12,526

Demographics

| Age | Baseline | Current |
|---|-----------------|-------------|
| Median (25 th , 75 th) | 53 (40, 64) | 59 (47, 71) |
| Min, Max | 14, 105 | 21, 101 |
| Sex | | |
| Female | 8,262 (65.96%) | |
| Male | 4,264 (34.04%) | |
| Race | | |
| American Indian & Alaska Native | 57 (0.46%) | |
| Asian | 85 (0.68%) | |
| Black or African American | 1,713 (13.68%) | |
| Native Hawaiian & Other Pacific Islander | 8 (0.06%) | |
| White/Caucasian | 9,138 (72.95%) | |
| Other | 1,136 (9.07%) | |
| Multiple | 247 (1.97%) | |
| Don't know/Not sure/Not answered | 142 (1.13%) | |
| Ethnicity | | |
| Hispanic or Latino | 1,543 (12.32%) | |
| Non-Hispanic or Latino | 10,803 (86.24%) | |
| Don't know/Not sure/Not answered | 180 (1.43%) | |

Participant status

| | |
|---------------|-----------------|
| Enrolled | 12,419 (99.15%) |
| Deceased | 782 (6.24%) |
| Active | 10,608 (84.69%) |
| On hold | 24 (0.19%) |
| Uncontactable | 96 (0.77%) |
| Inactive | 909 (7.26%) |
| Withdrawn | 107 (0.85%) |

Follow-up metrics

| | |
|--|--------------------------|
| Overall completeness of follow-up, n/N (%) | 47,643 / 78,020 (61.07%) |
| 100% completion (n, %) | 4,270 (34.09%) |
| ≥75% completion (n, %) | 6,084 (48.57%) |
| At least one follow-up complete (n, %) | 10,412 (83.12%) |
| Last completed follow-up ≤ 18 months | 7,218 (58.11%) |

Completion metrics based on past follow-up years only (current follow-up year excluded); denominator is participants ever eligible for follow-up (N=12,421)

Self-reported medical history

| | Prevalence at Baseline N=12,526 | Incidence in Follow-up n / N (%) * |
|---------------------------|------------------------------------|---------------------------------------|
| High cholesterol | 4,807 (38.4%) | 1,096 / 7,719 (14.2%) |
| High blood pressure | 4,699 (37.5%) | 977 / 7,827 (12.5%) |
| Obesity | 3,347 (26.7%) | 667 / 9,179 (7.3%) |
| Depression | 3,122 (24.9%) | 636 / 9,404 (6.8%) |
| Osteoarthritis | 2,201 (17.6%) | 1,135 / 10,325 (11.0%) |
| Diabetes | 1,942 (15.5%) | 585 / 10,584 (5.5%) |
| Asthma | 1,624 (13.0%) | 341 / 10,902 (3.1%) |
| Thyroid disease | 1,489 (11.9%) | 585 / 11,037 (5.3%) |
| Skin cancer, not melanoma | 1,307 (10.4%) | 673 / 11,219 (6.0%) |
| Osteoporosis /osteopenia | 1,271 (10.2%) | 733 / 11,255 (6.5%) |

* n/N = incident reports at follow up / number not reporting at baseline.

Cigarette smoking history

| Status at baseline | | Current status | |
|--------------------|---------------|--|---------------|
| Never smoked | 7,332 (58.5%) | Never smoked ("never smoker") | 7,262 (58.1%) |
| | | Smoker ("new smoker") | 32 (0.3%) |
| | | Former smoker ("tried being a smoker") | 38 (0.3%) |
| Smoker | 1,506 (12.0%) | Smoker ("consistent smoker") | 1,184 (9.5%) |
| | | Former smoker ("quitter") | 323 (2.6%) |
| Former smoker | 3,665 (29.3%) | Former smoker ("long-term quitter") | 3,574 (28.6%) |
| | | Smoker ("relapsing smoker") | 91 (0.7%) |

Status is derived from answers to cigarette-smoking questions at baseline and annual follow-up timepoints.

RESOURCES

| Collected Biospecimens | | Aliquots N=429,215 | EHR datasets | Participants N=12,526 |
|------------------------|--------------------|-----------------------|---|--------------------------|
| Buffy Coat | Cryovial, 2.0 mL | 9,553 (2.2%) | Any source | 8,113 (64.8%) |
| Plasma | Cryovial, 0.5 mL | 181,538 (42.3%) | Novant Health | 6,802 (54.3%) |
| | Cryovial, 4.0 mL | 153 (<0.1%) | Cabarrus Health Alliance | 2,339 (18.7%) |
| Serum | Cryovial, 0.5 mL | 126,457 (29.5%) | Cabarrus Rowan Community Health Centers | 659 (5.4%) |
| | Cryovial, 4.0 mL | 156 (<0.1%) | Bethesda Health Center | 304 (2.4%) |
| | Cryovial, 5.0 mL | 11,261 (2.6%) | Community Free Clinic | 65 (0.5%) |
| Urine | Cryovial, 10.0 mL | 39,757 (9.3%) | Atrium (Carolinas Healthcare) | 0 |
| | Cryovial, 4.0 mL | 168 (<0.1%) | | |
| Whole Blood | PAXgene RNA | 31,292 (7.3%) | | |
| | Vacutainer, 2.0 mL | 25,738 (6.0%) | | |
| | Vacutainer, 3.0 mL | 2,993 (0.7%) | | |
| | Vacutainer, 4.0 mL | 149 (<0.1%) | | |

| Nested subcohorts | N | Collected data |
|---------------------------------------|-------|---|
| Memory & Cognitive Health | 1,582 | MoCA, Trails B, word recall at baseline. Serial data & biospecimen collection at 2-yr follow-up. |
| Physical Performance & Aging | 1,000 | 6-min walk w/oximetry, 4-m walk, 30-sec chair sit/stand, single leg balance, accelerometry, MoCA at baseline. Serial data & biospecimen collection at 2-yr follow-up. |
| Multiple Sclerosis | 973 | MS-focused questionnaire & health history at baseline. Serial data & biospecimen collection for PPMS subgroup (n=25). |
| Chronic Obstructive Pulmonary Disease | 452 | Spirometry, 6-m walk w/oximetry, IPAQ short form at baseline. Serial questionnaire at 6-m follow-up. |

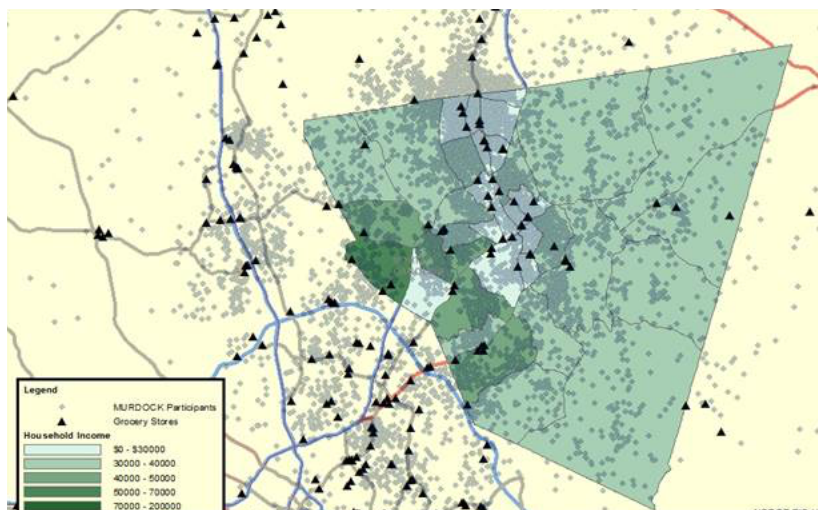
Geospatial analysis capabilities

Support tools

ArcGIS
DataFlux
R ggplot, maps libraries
Oracle locator

Data sources

Geospatially-linked questionnaire data
American Community Survey (ACS)
Census
Basemaps, layer files



SDOH-researched domains (Data+)

Grocery stores
Restaurants
Primary care
Fitness, recreation
Schools
Pharmacies
Hospitals
Urgent care
Worship
Law enforcement
Fire, EMS
Mental health
Starbucks, coffee shops
Convenience stores
Liquor stores
Vape shops
Public transportation